

VANGUARD[®]

POWERING YOUR REPUTATION:

WHY VANGUARD'S COMMERCIAL-
GRADE ENGINE PORTFOLIO SETS THE
INDUSTRY STANDARD



TABLE OF CONTENTS

1	INTRODUCTION	3
2	THE VANGUARD STANDARD	4
3	INNOVATIONS THAT DRIVE	6
4	PORTFOLIO TO POWER.....	10
5	A TRUE PARTNERSHIP	12
6	POWER YOUR REPUTATION.....	14



YOUR REPUTATION IS POWERED BY A HIGHER STANDARD

In the competitive commercial equipment market, your reputation hinges on reliable power. You're not just selling a machine; you're selling productivity.

But not all engines marketed as “commercial grade” are created equal. Basic engines only meet a checklist. Commercial success, however, requires meeting real-world challenges — like remote jobsites, demanding duty cycles and costly service calls — with superior innovation, durability and support.

Choosing the right commercial engine partner is critical.

Vanguard® is a partner that defines the high-performance standard. With more than 35 years in commercial power experience and 115+ years in power application, we have evolved from an engine brand into a power application expert. What truly sets the Vanguard portfolio apart is our superior, vertically integrated manufacturing process and proprietary performance innovations. We offer an expansive portfolio that can power your entire lineup, backed by a true partnership to ensure that your equipment works seamlessly with our engines.



THE VANGUARD STANDARD: ENGINEERING THAT OUTPERFORMS

Vanguard establishes a standard of durability and performance that outperforms competitors, backed by a deep legacy of expertise and an advanced manufacturing process.

Robust Components and Purpose-Built Design

True commercial-grade design goes beyond minimum specs. It means planning for uncompromising durability where others just meet the standard. You can see this design philosophy in the engine parts themselves:

- > Forged crankshafts for superior strength
- > Premium bearings to handle heavy loads
- > Heavy-duty castings and Dura-Bore™ cast iron sleeves for resilience

This translates to longer equipment life, fewer failures and a demonstrably more durable product for your end user.



A LEGACY OF UNMATCHED APPLICATION EXPERTISE

Vanguard's legacy — more than 35 years in commercial power and 115+ years in power application — is more than just numbers. It represents a deep institutional knowledge of real-world challenges. We've seen how equipment is really used and abused in the field, and we put that knowledge to use by building a tougher, stronger product that can stand up to the task.

We understand the intricate relationship between the engine and the equipment. This application expertise is the ultimate proof point. Vanguard® engines have demonstrated their reliability for decades in the toughest applications, building a foundation of trust. When you partner with Vanguard, you aren't just buying a component; you're gaining a partner with a proven track record.

35
YEARS
in commercial power

115+
YEARS
in power application

INTEGRATED QUALITY CONTROL

This legacy of expertise is embedded in every step of our manufacturing process. Unlike modular assemblers, Vanguard takes a vertically integrated approach — controlling everything from design and casting to manufacturing and testing. This includes our V-Twin engines, which are proudly made in the U.S.* This rigorous oversight ensures a level of quality and consistency you can trust, resulting in a more reliable component and a stronger partnership.

*With domestic and global parts.



INTRODUCTION

THE VANGUARD STANDARD

INNOVATIONS THAT DRIVE

PORTFOLIO TO POWER

TRUE PARTNERSHIP

POWER YOUR REPUTATION

INNOVATIONS THAT DRIVE UPTIME AND EFFICIENCY

Vanguard® commercial engines feature exclusive technologies — developed from direct customer feedback — that solve real-world problems, provide a competitive edge and drive profitability for you and your customers.

SMART, EFFICIENT POWER

We believe Electronic Fuel Injection (EFI) should be done right. As the first to introduce this technology to the commercial market, we know that means avoiding a one-size-fits-all approach. Vanguard EFI technology utilizes the Engine Control Module (ECM) to tune every single operating point unique to the engine. This precision extends to our Electronic Throttle Control (ETC) technology, which reacts instantaneously to applied loads to maintain consistent power exactly when the application demands it.



ELECTRONIC FUEL INJECTION

The ECM acts as the engine's brain, monitoring sensors and fine-tuning fuel and spark delivery thousands of times per minute. It makes "cycle by cycle" decisions to deliver:

- > **Improved Starting:** Starts reliably at all temperatures.
- > **Smooth Performance:** Automatically compensates for all elevations.
- > **Quick Load Acceptance:** Responds immediately to demands.
- > **Reduced Fuel Consumption:** Delivers fuel more efficiently than a carburetor.



INTRODUCTION

THE VANGUARD STANDARD

INNOVATIONS THAT DRIVE

PORTFOLIO TO POWER

TRUE PARTNERSHIP

POWER YOUR REPUTATION

ELECTRONIC THROTTLE CONTROL

A flywheel speed sensor detects any fluctuation in RPM — caused by sudden load changes or environmental factors — and reacts instantaneously, signaling the throttle body to adjust. This delivers:

- > **Smooth, Consistent Power:** Maintains performance no matter the terrain or load on the engine.

PROTECTION IN TRANSIT: TRANSPORTGUARD®

Rental partners told us that end users often forget to shut off the fuel during transport, leading to oil and fuel dilution and costly downtime. To solve this common problem, Vanguard innovated a single-action solution: TransportGuard.

Featured on Vanguard® Single-Cylinder engines, our exclusive TransportGuard technology integrates the throttle, ignition and fuel shut-off into a single 3-in-1 control. When the user shuts off the engine, the fuel flow is automatically blocked from the carburetor.

This simple, user-friendly design prevents oil dilution, resulting in fewer unscheduled oil changes, less downtime and equipment that is always ready to rent or work. It protects the engine and enhances your customer's ROI.



A Vanguard feature customers love is the fuel and engine on/off combined functionality of TransportGuard. It's one switch — other engines require multiple movements to manage the engine and fuel. Customers typically struggle when it's not one simple move.



*Adam Lawson,
Rental and Outdoor Power Equipment Manager, Niemann ACE Hardware*



INTRODUCTION

THE VANGUARD STANDARD

INNOVATIONS THAT DRIVE

PORTFOLIO TO POWER

TRUE PARTNERSHIP

POWER YOUR REPUTATION

REDEFINING MAINTENANCE

Vanguard has streamlined the maintenance experience to help you minimize costs and maximize uptime.

VANGUARD® OIL GUARD™ SYSTEM

Featured exclusively on select vertical shaft BIG BLOCK™ and Mid-Block engines, this is a revolutionary dry sump system. It features a five-quart external reservoir with one quart of oil in the crankcase and hoses for a total system capacity of six quarts. The system continuously circulates oil away from the engine's intense heat, minimizing thermal breakdown. This system enables:

- > **An industry-leading 500-hour oil change interval**, which delivers up to 60% savings on oil maintenance costs.*
- > **Superior lubrication** even at angles up to 45°, keeping equipment on the job.
- > **Cleaner and faster maintenance** with an easy-fill cap and integrated filter.
- > **Peace of mind** thanks to the large six-quart capacity, dramatically reducing the risk of engine damage if an operator forgets to check the oil level.



*Per season, per unit on oil maintenance.



Oil Guard makes equipment an easy sell. Our customers feel more confident in their purchase and it gives them peace of mind knowing they have much less of a maintenance workload. Excessive oil consumption failures have virtually been eliminated with this system.

Brian Winkler, Owner, Woodland Commercial Equipment



INTRODUCTION

THE VANGUARD STANDARD

INNOVATIONS THAT DRIVE

PORTFOLIO TO POWER

TRUE PARTNERSHIP

POWER YOUR REPUTATION

OIL XTEND™ SYSTEM

Optional on select CXi Series engines, this system helps maximize uptime and keep you on the job longer by allowing you to work up to 250 hours between maintenance intervals — 2.5 times the industry standard. This is achieved by:

- > **250-hour maintenance** intervals for oil changes and replacing oil filters, spark plugs, fuel filters and air filters.
- > **Using an automotive-style oil filter** that is 20% more efficient and offers 45% more dust-holding capacity than a premium spin-on filter.
- > **Combining a six times larger oil filter housing** (no funnel needed) and an EZ Oil Drain Hose for quick, mess-free maintenance.



A PORTFOLIO TO POWER YOUR ENTIRE LINEUP

Vanguard has a purpose-built power solution for all of your equipment. This allows you to standardize on one trusted engine partner across multiple product lines, simplifying your supply chain, engineering and support.

THE FEATURED POWERHOUSES VANGUARD® BIG BLOCK™ SERIES

For the most demanding applications where downtime is not an option. Available in both **horizontal** and **vertical** shaft configurations, this lineup features significant recent enhancements focused on durability and performance. Key features include a new cooler-running design*, an upgraded starter for reliable power, and options for EFI/ETC and the 500-hour Oil Guard™ system.

Markets: Rental, Light Construction, Commercial Turf, Air Cooled Marine, Agriculture, Recreation

*Compared to previous BIG BLOCK models



VANGUARD SINGLE-CYLINDER SERIES

Purpose-built for commercial performance based on extensive customer feedback, this lineup features exclusive, problem-solving features like TransportGuard® and Cyclonic Air Filtration, headlined by the advanced Vanguard 400 with EFI/ETC. This single-cylinder family also includes the Briggs & Stratton™ XR Series, the foundational workhorse for reliable, everyday utility.

Markets: Rental, Light Construction, Industrial, Agriculture, Racing



INTRODUCTION

THE VANGUARD STANDARD

INNOVATIONS THAT DRIVE

PORTFOLIO TO POWER

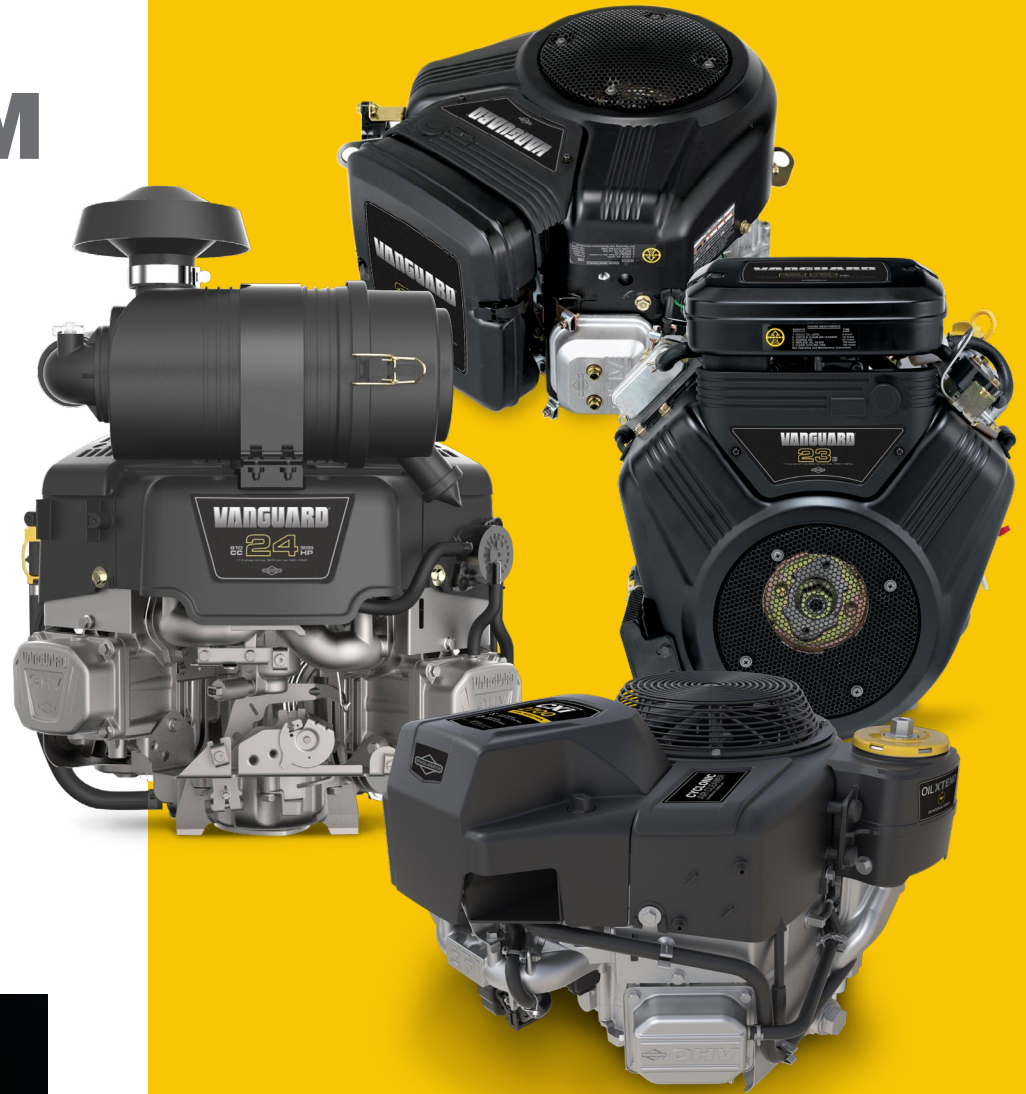
TRUE PARTNERSHIP

POWER YOUR REPUTATION

THE FULL SPECTRUM OF POWER

Our full spectrum of power includes **Mid-Block V-Twin engines**, a key solution for the commercial turf market. It also features our workhorse Small Block V-Twin engines, available in both **horizontal** and **vertical** shaft configurations. These versatile engines power equipment across a wide range of industries, including rental, light construction, industrial, agriculture, welding, golf, fire and rescue and racing.

The Vanguard lineup is complemented by the **Briggs & Stratton™ CXi Series**, another critical V-Twin engine for commercial turf that is specifically designed for high-debris applications and features the optional 250-hour Oil Xtend™ system.



SEE AN ENGINE CALLING YOUR NAME?
Get in touch with us to talk about next steps.



INTRODUCTION

THE VANGUARD STANDARD

INNOVATIONS THAT DRIVE

PORTFOLIO TO POWER

TRUE PARTNERSHIP

POWER YOUR REPUTATION

A TRUE PARTNERSHIP: APPLICATION EXPERTISE AND UNRIVALED SUPPORT

An engine is a component. A partnership is a competitive advantage. Vanguard moves beyond the engine to offer a full, collaborative partnership, from initial design to long-term aftermarket support.

COLLABORATION FROM DAY 1

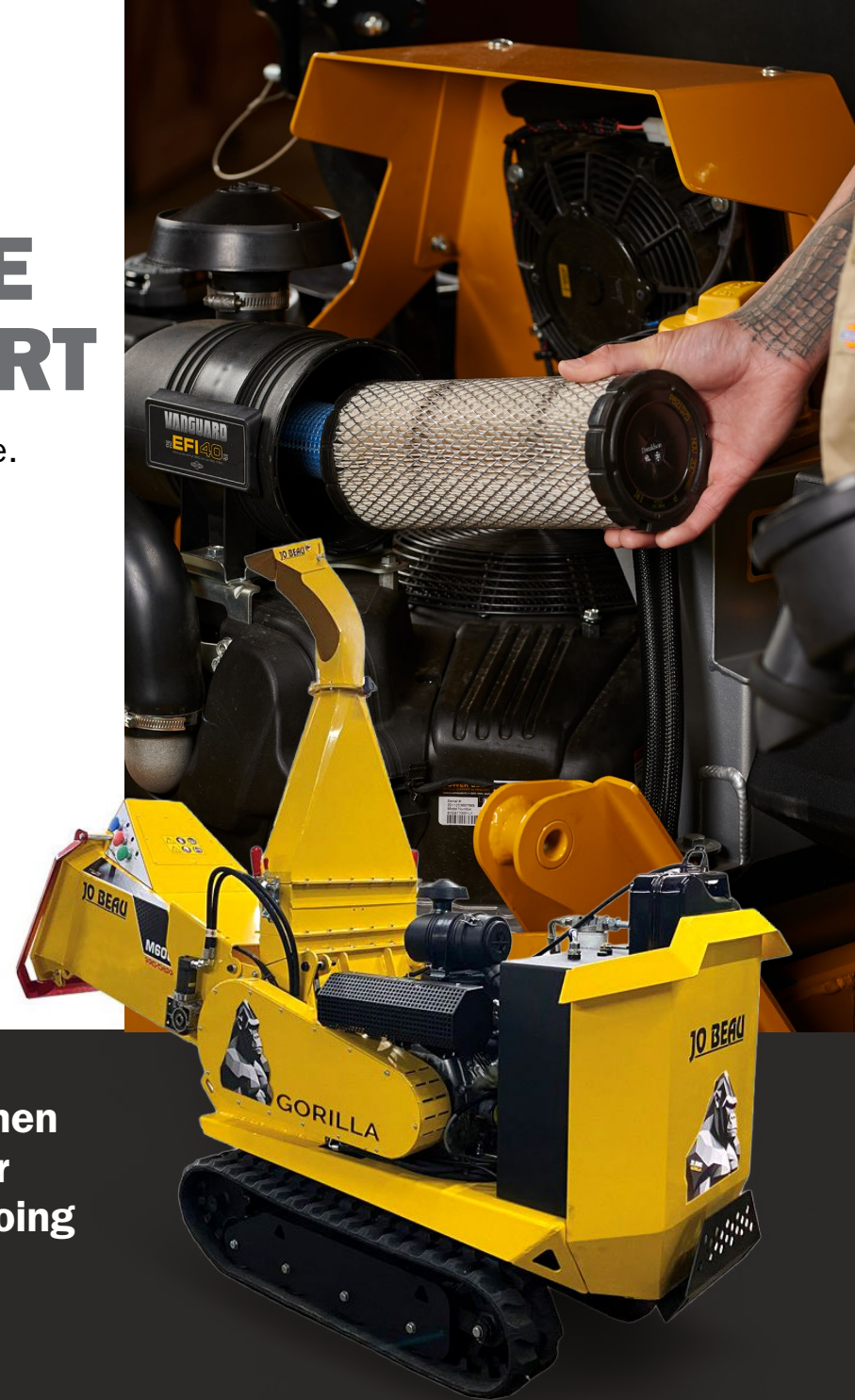
Our collaboration begins right from the start, as we work closely with OEMs during the design phase of their equipment. This partnership is brought to life by our exclusive Power Application Centers (PACs), which are Vanguard's application expertise in action. At these OEM-centric service centers, our engineers focus on ensuring that the power solution and your equipment work seamlessly together to deliver maximum productivity, optimal balance and a reliable user experience.



The biggest benefit we offer OEMs is that when they get a product that has been through our facility, they know that the performance is going to be solid. It's not going to fail.



*Brian Brunelli,
Manager at the Wauwatosa, Wisconsin, PAC.*



LONG-TERM SUPPORT FOR THE END USER

When your equipment is powered by Vanguard, it's backed by the most extensive **small engine service network** in the industry. This provides a distinct competitive advantage for your customers and significantly streamlines your aftermarket operations.

- > **The Global Network:** The power of the **Briggs & Stratton dealer network** — with thousands of locations — means that a professional, trained Master Service Technician is always nearby.
- > **Genuine Vanguard Support:** We make it easy for end users to maintain their equipment with **Vanguard Oil & Maintenance Kits**. We ensure regional parts availability, backed by six parts distribution centers across North America, to minimize downtime.
- > **Backed by Strong Commercial Warranties:** We stand behind our product with **2-year and 3-year commercial limited warranties**, a testament to our confidence in our commercial-grade engineering.



13,000 DEALERS IN NORTH AMERICA

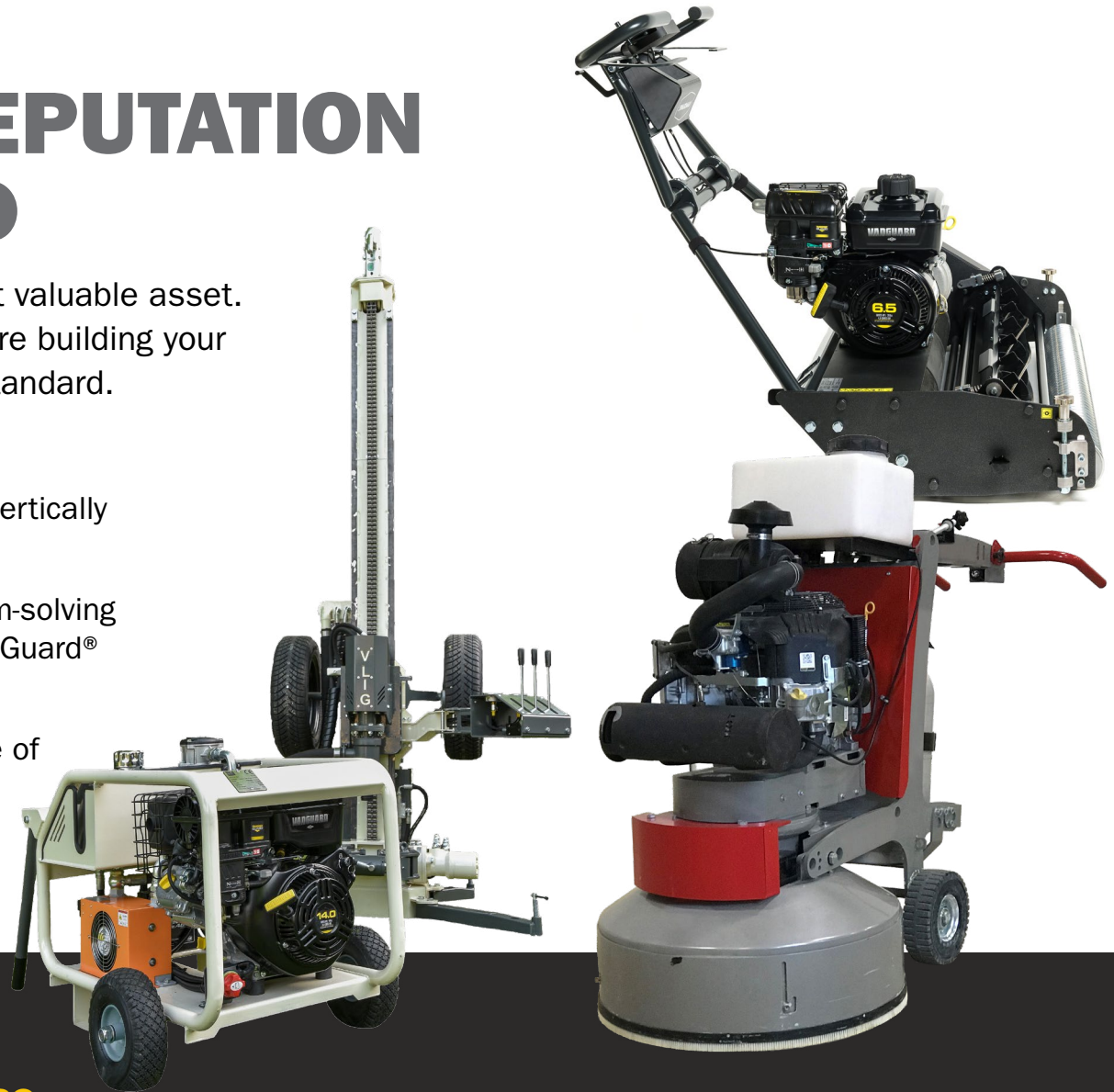


POWER YOUR REPUTATION WITH VANGUARD

In today's market, your reputation is your most valuable asset. Choosing Vanguard is a declaration that you are building your equipment — and your brand — to a higher standard.

When you partner with Vanguard, you get:

- > **Superior Engineering:** Proven by an advanced, vertically integrated manufacturing process.
- > **Industry-Leading Innovations:** Exclusive problem-solving technologies like Oil Guard™, EFI/ETC, TransportGuard® and Oil Xtend™.
- > **A Complete Portfolio:** A solution for every piece of your equipment.
- > **A True Partnership:** Unmatched application expertise and full-lifecycle support.



Expect Innovation. Expect Expertise. Expect Support.

Partner with Vanguard and power your reputation with an engine built to last. [Contact a Vanguard representative today to discuss your application.](#)

VANGUARD®

vanguardpower.com

© 2026 Briggs & Stratton LLC. All rights reserved.



INTRODUCTION

THE VANGUARD STANDARD

INNOVATIONS THAT DRIVE

PORTFOLIO TO POWER

TRUE PARTNERSHIP

POWER YOUR REPUTATION