

VANGUARD®



PRODUCTIVITY BY DESIGN

Vanguard® Single-Cylinder Engines

5.0 - 14.0 GROSS HP*
(3.7 - 10.4 GROSS kW*)

BRIGGS & STRATTON

* All power levels are stated gross horsepower at 3'600 rpm per SAE J1940 as rated by Briggs & Stratton.

Setting the Standard for Single-Cylinder Engines.

Introducing Vanguard single-cylinder engines

Our new single-cylinder engines set the standard in every sense. The engines work harder, have longer maintenance cycles, reduce equipment downtime and ultimately, help you to get more done. By listening to the experts – OEMs, contractors, rental store owners and equipment operators – we've been able to put more in, to help you get more out.

REDEFINING BEST-IN-CLASS

Designed from the ground-up, our range of OHV single-cylinder engines is engineered to deliver durable performance with easier starting, lower noise and vibration, and reduced environmental impact. With global emissions compliance, the engines are **EU Stage 5 Compliant** – as well as being compliant for use in all 50 US states.

Featuring a cast-iron sleeve, dual ball bearings and a forged crankshaft, our commercial grade engines are fully optimized and precision balanced. It means you can benefit from a more durable, more comfortable and more reliable power solution.

Increased productivity starts here.

Single-Cylinder Power Range

Vanguard 160 – 5.0 Gross HP (3.7 Gross kW*)
169cc

Vanguard 200 – 6.5 Gross HP (4.8 Gross kW*)
203cc

Vanguard 300 – 10.0 Gross HP (7.5 Gross kW*)
307cc

Vanguard 400 – 14.0 Gross HP (10.4 Gross kW*)
408cc



2X 11
[0.43]

* All power levels are stated gross horsepower at 3'600 rpm per SAE J1940 as rated by Briggs & Stratton.



KEY FEATURES	ENHANCED DURABILITY	EXCEPTIONAL STARTABILITY	REDUCED NOISE, VIBRATION, & HARSHNESS	SUPERIOR AIR MANAGEMENT
Starts Down To -29°C ¹		●		
Optimised Reciprocating Mass	●		●	
Stale Fuel Resistance		●		
Integrated Cyclonic Air Cleaner				●
Nano Media Air Cleaner Filter				●
Acoustically Designed Engine			●	
TransportGuard System	●	●		
Universal Controls		●		
Dual Ball Bearings	●			
Cast Iron Sleeve	●			
Forged Crankshaft	●			

NO MORE OIL/FUEL DILUTION, EVER



With the patented **TransportGuard™** system, exclusive to Vanguard 5.0 - 14.0 Gross HP engines, simply move the 3-in-1 control to shut off both engine ignition and fuel supply simultaneously.

- > **No more** oil/fuel dilution
- > **No more** unnecessary oil changes
- > **No more** unnecessary oil wastage
- > **Not available on competitive engines**

SAFEGUARD YOUR INVESTMENT



The new Vanguard single-cylinder engines are supplied with a full 3 Year Limited Commercial Warranty.** **An additional 1 Year** is available for free subject to engine registration. Visit www.vanguardpower.com/na/en_us/support/warranty for warranty details.

¹ Based on proper starting procedures and fuel and oil specifications.

* All power levels are stated gross horsepower at 3'600 rpm per SAE J1940 as rated by Briggs & Stratton.

** See https://www.vanguardpower.com/na/en_us/support/warranty.html for warranty details.

Vanguard 160

5.0 Gross HP

COMPACT AND POWERFUL.

The Vanguard 160 – 5.0 Gross HP (3.7 Gross kW*) delivers high performance in a compact package. The engine offers improved starting, reduced maintenance, lower total cost of ownership and better service and support.

Our engine also features our exclusive TransportGuard system – a 3-in-1, market-driven innovation that prevents damage from oil and fuel dilution during transport. This makes the engine an ideal solution for many applications, including tillers, cultivators, pressure washers, water pumps, enclosed generators, blowers, compaction plates, trowels and more especially when used in the rental channel.



5.0
Gross HP

169
Displacement (cc)

1
No. of Cylinders

GAS
Fuel Type

Engine Type	Single-cylinder, 4-stroke, air cooled, OHV (Overhead Valve)
Model Number	10V3
Gross HP (kW) @ 3'600 rpm	5.0 (3.7*)
Displacement (cc)	169
Cylinder	Cast iron sleeve
Bore & Stroke (mm)	62.0 x 56.0
Fuel Tank Capacity (l)	3.1
Oil Capacity (l)	0.6
Dry Weight (kg)	17.9
Dimensions L x W x H (mm)	See dimensional drawings (pg 5)

STANDARD FEATURES:

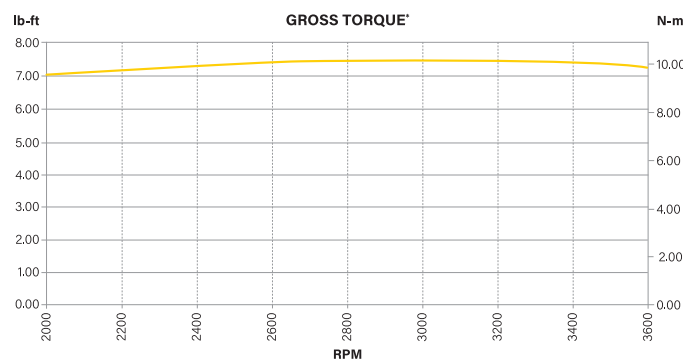
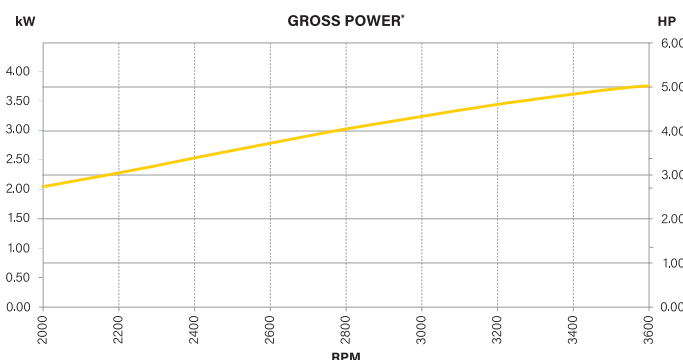
- > TransportGuard
- > Dual ball bearings
- > Integrated cyclonic air cleaner
- > Super Lo-Tone muffler
- > Splash lubrication
- > Mechanical governor

OPTIONAL FEATURES:

- > Electric start
- > Low oil sensor
- > 45° inclination package
- > Clear flange muffler (See drawings pg 6)
- > Metric flange
- > Tankless / mufflerless
- > 2:1 gear reduction package (See drawings pg 6)
- > 6:1 gear reduction package (See drawings pg 6)

CRANKSHAFT OPTIONS:

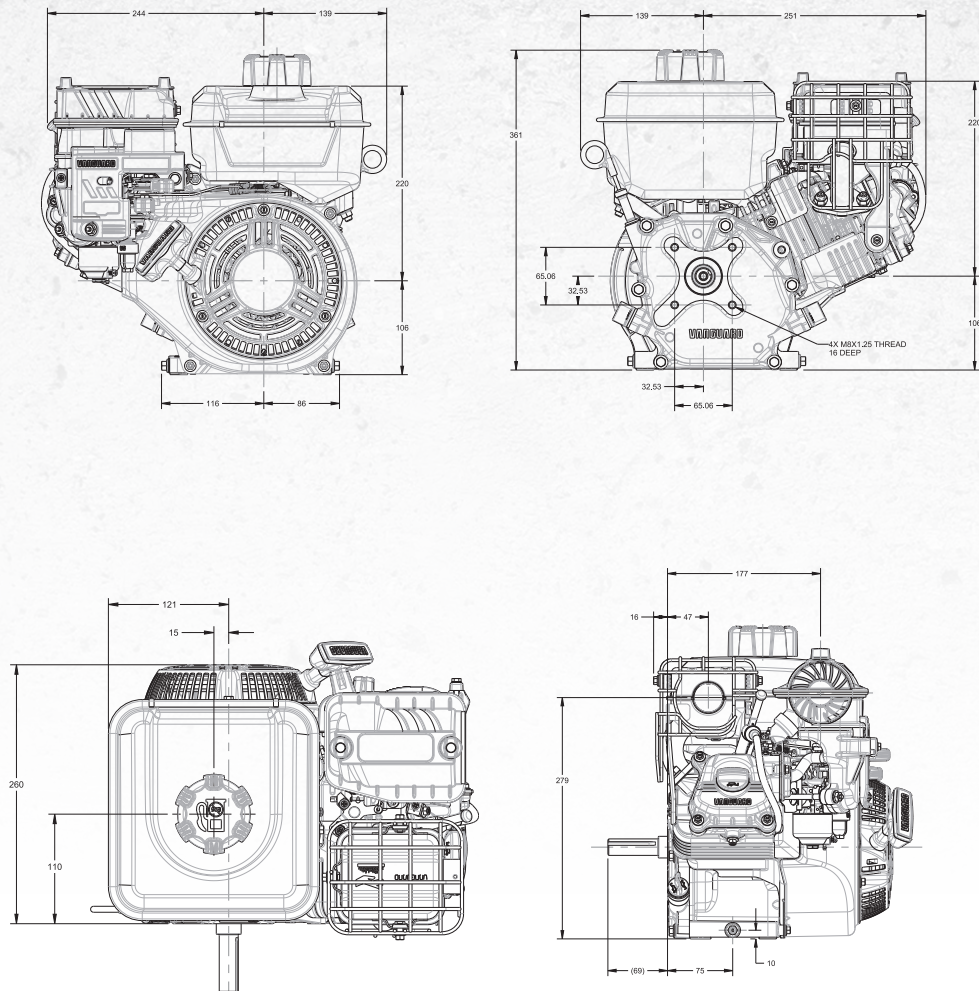
- > 3/4" dia. 2.420" length straight keyway (19.05mm dia. 61.50mm length)
- > 20mm dia. 52.9mm length straight keyway
- > 5/8" dia. 2.420" length threaded (15.90mm dia. 61.50mm length)



* All power (HP) and torque (Nm) levels are stated Gross per SAE J1940 as rated by Briggs & Stratton

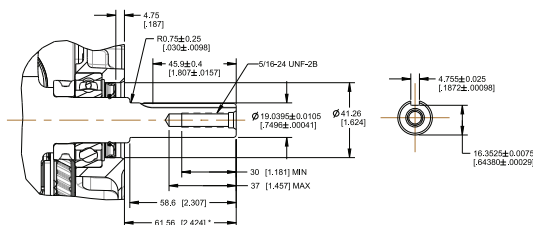
** See https://www.vanguardpower.com/na/en_us/support/warranty.html for warranty details.

DIMENSIONS (unit mm)

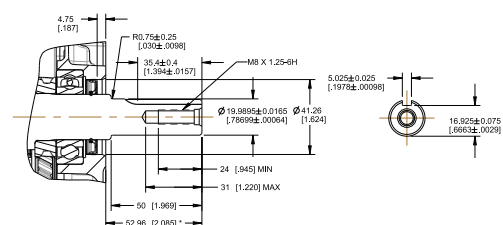


CRANKSHAFT OPTIONS**

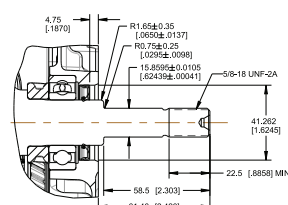
3/4" DIA. 2.420" LENGTH STRAIGHT KEYWAY (19.05mm dia. 61.50 mm length)



20mm. DIA 52.9mm. LENGTH STRAIGHT KEYWAY

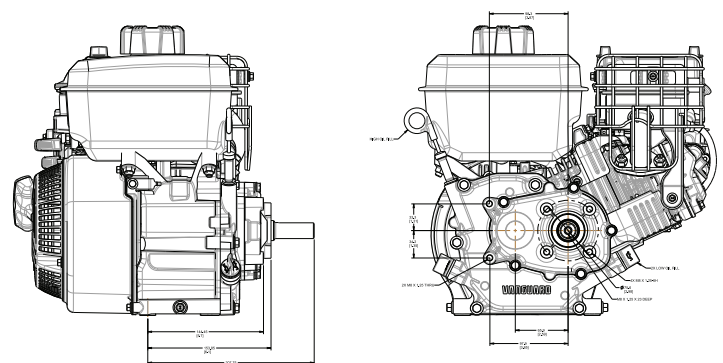


5/8" DIA. 2.420" LENGTH THREADED (15.90mm dia. 61.50mm length)

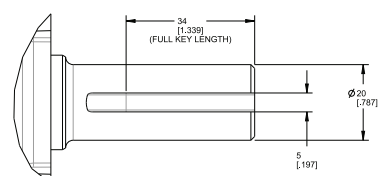


* All power levels are stated gross horsepower at 3'600 rpm per SAE J1940 as rated by Briggs & Stratton.

** Contact your Vanguard representative for additional crankshafts



2:1 GEAR REDUCTION



Vanguard 200

6.5 Gross HP

DURABLE PERFORMANCE.

The Vanguard 200 – 6.5 Gross HP (4.8 Gross kW*) is engineered to deliver durable performance with easier starting and lower noise and vibration. It's therefore ideal for powering applications like tillers, cultivators, pressure washers, water pumps, enclosed generators, blowers, compaction plates, trowels and more.

The engine also features the exclusive Vanguard TransportGuard system, which prevents oil and fuel dilution during equipment transportation. With 2x longer maintenance intervals than the closest competitor, this engine delivers increased productivity and a lower total cost of ownership.



6.5
Gross HP

203
Displacement (cc)

1
No. of Cylinders

GAS
Fuel Type

Engine Type	Single-cylinder, 4-stroke, air cooled, OHV (Overhead Valve)
Model Number	12V3
Gross HP (kW) @ 3'600 rpm	6.5 (4.8*)
Displacement (cc)	203
Cylinder	Cast iron sleeve
Bore & Stroke (mm)	68.0 x 56.0
Fuel Tank Capacity (l)	3.1
Oil Capacity (l)	0.6
Dry Weight (kg)	17.9
Dimensions L x W x H (mm)	See dimensional drawings (pg 8)

STANDARD FEATURES:

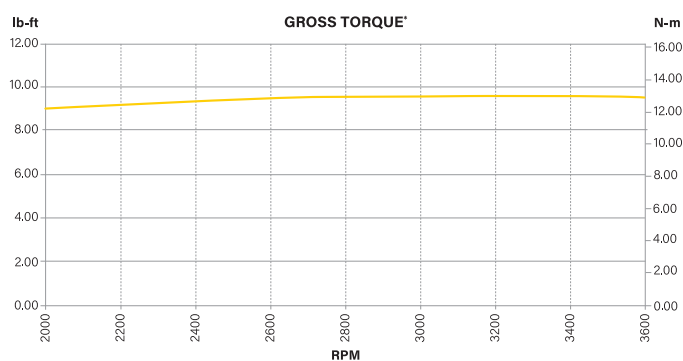
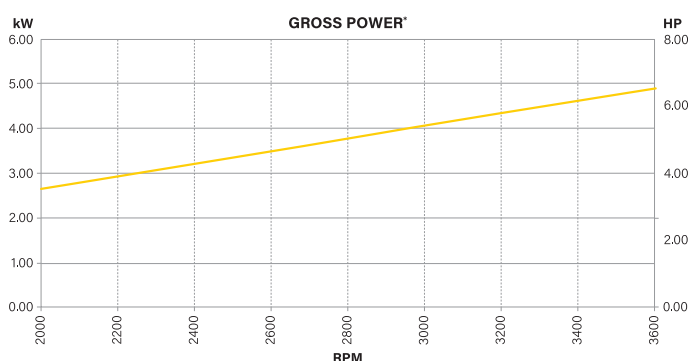
- > TransportGuard
- > Dual ball bearings
- > Integrated cyclonic air cleaner
- > Super Lo-Tone muffler
- > Splash lubrication
- > Mechanical governor

OPTIONAL FEATURES:

- > Electric start
- > Low oil sensor
- > 45° inclination package
- > Clear flange muffler (See drawings pg 10)
- > Low profile air cleaner
- > Metric flange
- > Tankless / mufflerless
- > 2:1 gear reduction package (See drawings pg 10)
- > 6:1 gear reduction package (See drawings pg 10)

CRANKSHAFT OPTIONS:

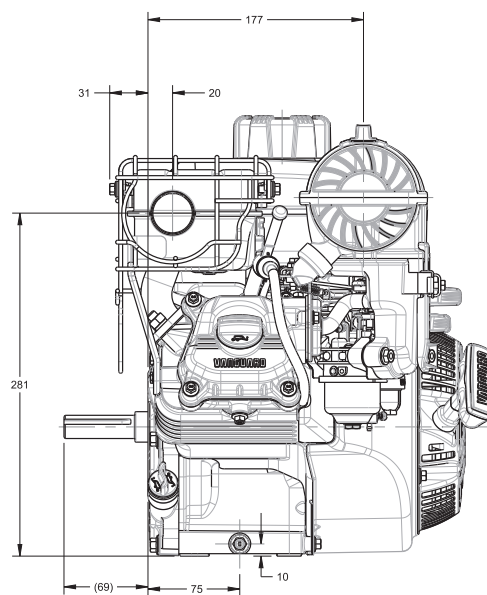
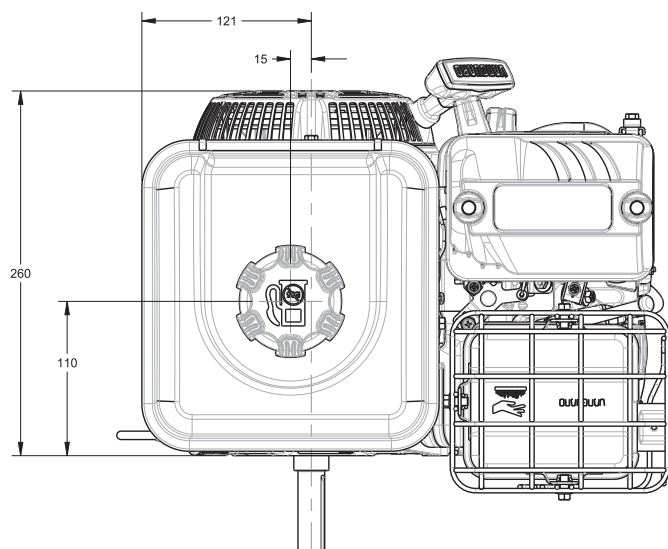
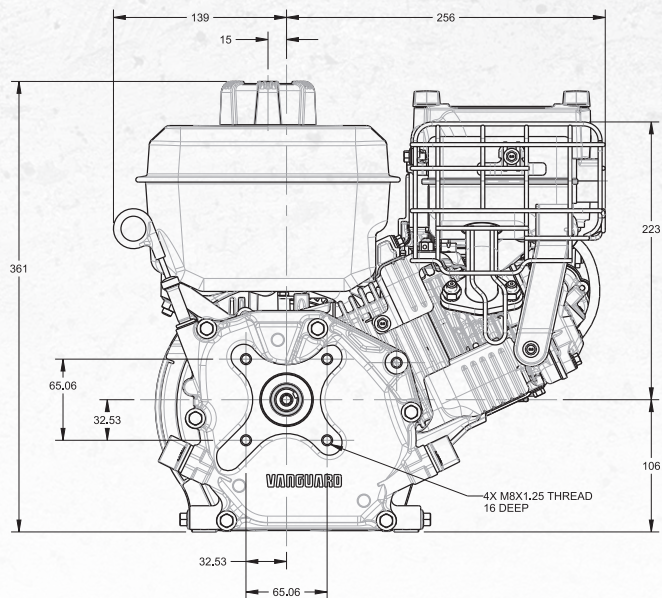
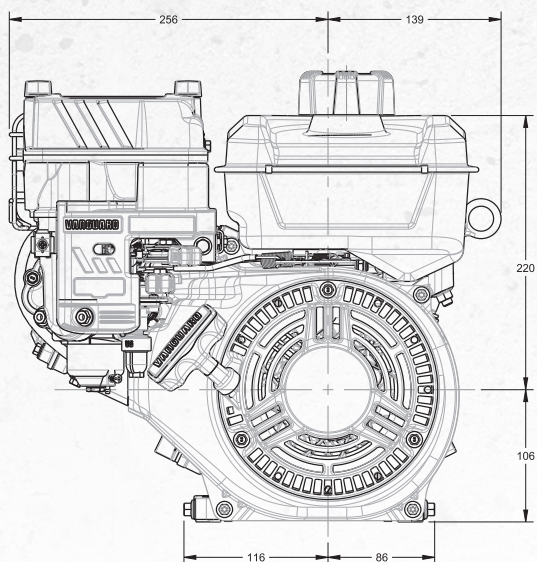
- > 3/4" dia. 2.42" length straight keyway (19.05mm dia. 61.50mm length)
- > 20mm dia. 52.9mm length straight keyway
- > 1" dia 3.183" length straight keyway (25.40 mm dia. 80.85 mm length)
- > 5/8" dia. 2.42" length threaded (15.90 mm dia. 61.50 mm length)
- > 3/4" SAE taper



* All power (HP) and torque (Nm) levels are stated Gross per SAE J1940 as rated by Briggs & Stratton

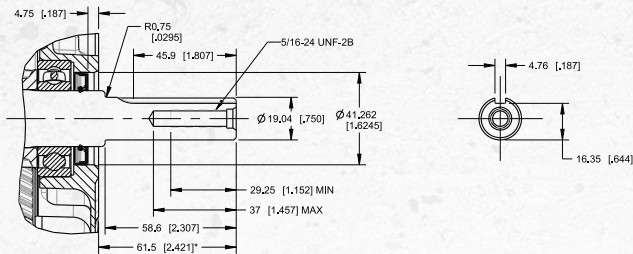
** See https://www.vanguardpower.com/na/en_us/support/warranty.html for warranty details.

DIMENSIONS (unit mm)

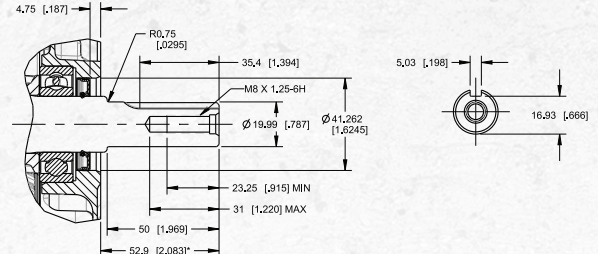


CRANKSHAFT OPTIONS**

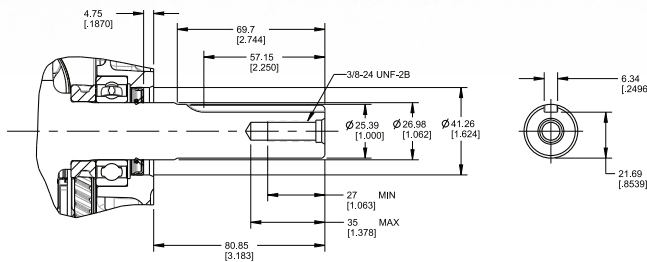
3/4" DIA. 2.420" LENGTH STRAIGHT KEYWAY (19.05mm dia. 61.50 mm length)



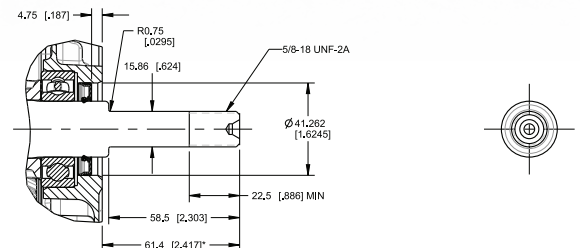
20mm DIA. 52.9mm LENGTH STRAIGHT KEYWAY



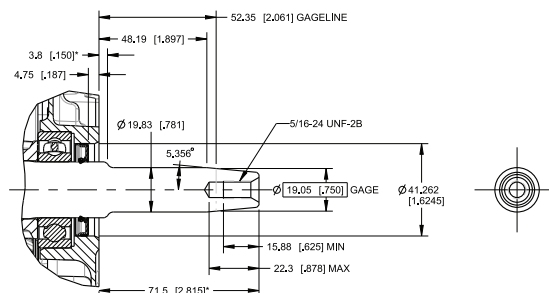
1" DIA 3.183" LENGTH STRAIGHT KEYWAY (25.40mm dia. 80.85mm length)



5/8" DIA. 2.42" LENGTH THREADED (15.90mm dia. 61.50mm length)



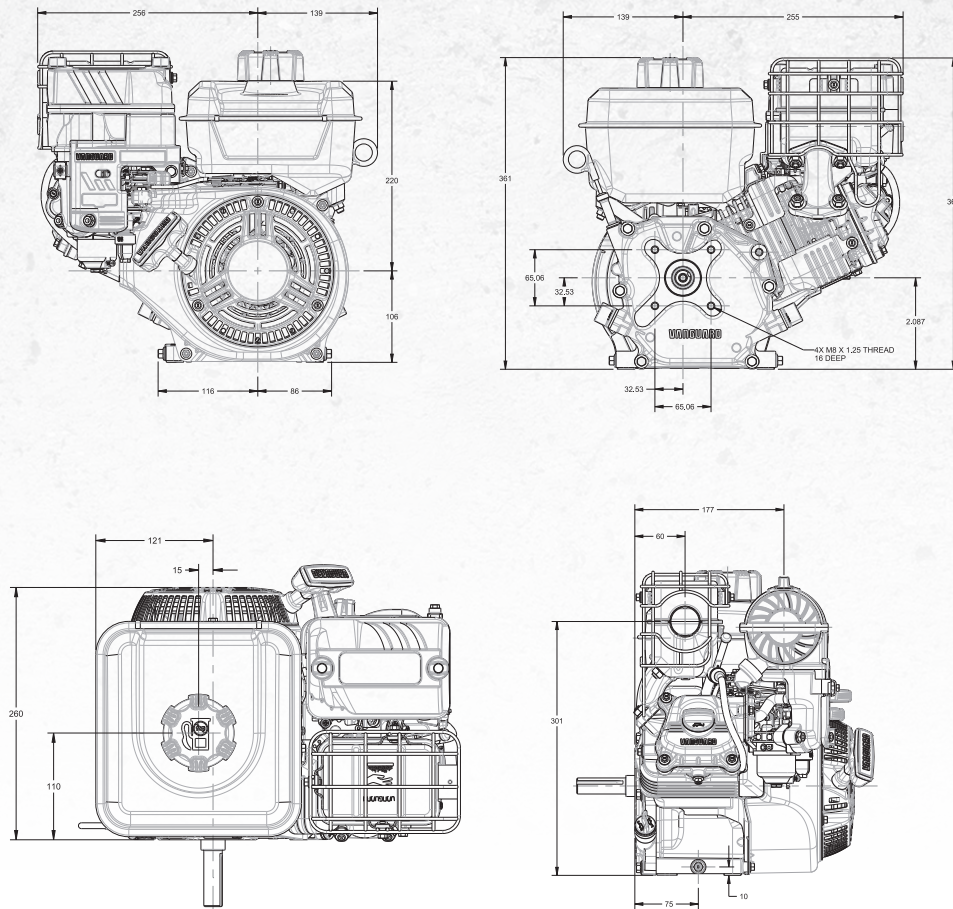
3/4" SAE TAPER



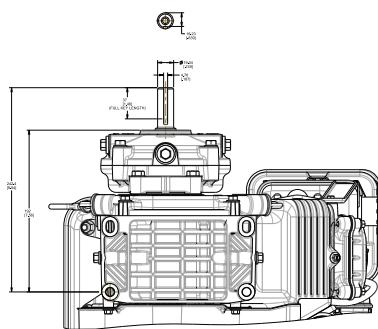
* All power levels are stated gross horsepower at 3'600 rpm per SAE J1940 as rated by Briggs & Stratton.

** Contact your Vanguard representative for additional crankshafts

OPTIONAL CLEAR FLANGE MUFFLER (unit mm)

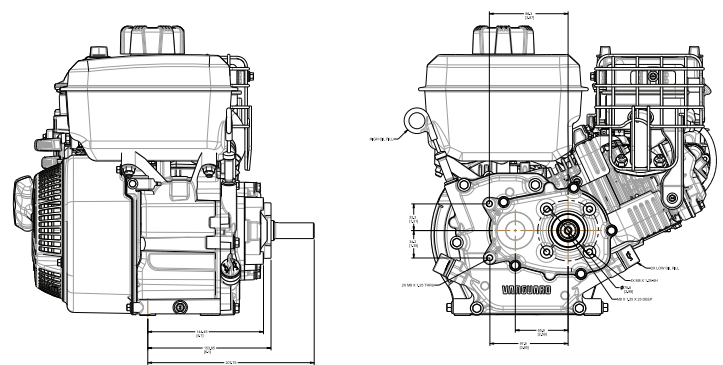
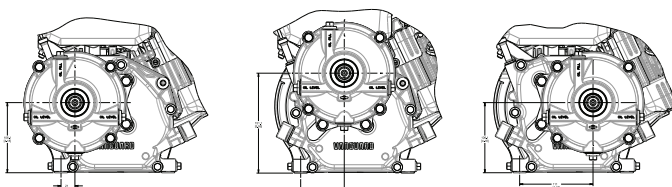


OPTIONAL GEAR REDUCTION

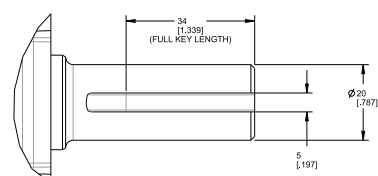


6:1 GEAR REDUCTION

Gear case positions at 9, 12, or 3 o'clock



2:1 GEAR REDUCTION



Inspired by the Experts.

Vanguard set a new standard for single-cylinder engines by listening to the experts — leading equipment manufacturers, contractors, rental store owners and equipment operators. The result: engines with exceptional power that start easier and require less maintenance than competitors. And we back them all with better service and support — including an industry-leading warranty.

Optimized Starting

Starting sequence requires less effort and is tested to perform down to 0° F

- > **Advanced design of ignition, combustion and carburetion systems** deliver reliable, easy starting in all seasons
- > **All-new governing system and mechanical compression release** improve cold-weather starting
- > **Plated carburetor surfaces** help resist corrosion and buildup caused by stale fuel

Unrelenting Power

Exceptional power is what matters to our customers

- > **Power that's built to perform in the real world**, — not just at a testing facility
- > **Vanguard engines deliver demonstrably more rugged, reliable power than the rest** — no matter the conditions

Extended Maintenance Intervals

Reduces time in the shop and increases time on the jobsite

- > **Advanced oil management system** allows the engine to run efficiently for up to 200 hours between oil changes
- > **Oil sensor protects the engine** from low oil level conditions

Cyclonic Air Filtration

Extends air filter replacement interval to 600 hours

- > **True cyclonic air chamber** actively manages the airflow
- > **Advanced Nano Filter Media with Autoshed Technology** provides up to 120% more dust-holding capacity¹

TransportGuard^{®2}

Applies to Vanguard 160, 200, 300 and 400 engines only.

Eliminates oil/fuel dilution

- > **3-in-1 control lever** — for user-friendly operation
- > **Combined throttle, ignition and fuel control lever** — prevents mixing of fuel and oil during transport
- > **Saves you money** — reduced costly downtime and expense

Superior Support Solutions

A superior-performing engine is just the beginning

- > **The parts you need**, when you need them — wherever you may be in the world
- > **Industry-leading global 3-year limited commercial warranty³**
- > **Dedicated commercial technical support** available
- > **Genuine parts**, prices with your bottom line in mind
- > **Power Code found on each engine** that gives you immediate access to the owner's manual, troubleshooting information, and the ability to locate the nearest dealer with the scan of your smartphone
- > **Service education** that trains more than 6,000 certified technicians worldwide annually



Register your engine at vanguardpower.com/registration, and receive an extra year of commercial limited warranty!⁴



Vanguard 400
EFI/ETC

EFI & ETC



We added Electronic Fuel Injection and Electronic Throttle Control⁵ technologies to our 408cc single-cylinder engine

- > **Vanguard EFI:** Delivers **greater efficiency and higher productivity** due to no droop
- > **Vanguard ETC:** Delivers **smooth, consistent power** no matter the terrain or load on the engine

VANGUARD[®]

BRIGGS & STRATTON

Copyright ©2025. All rights reserved.

WWW.VANGUARDPOWER.COM

⁴Select your region by clicking the dropdown menu at the top-right corner

¹Vanguard 200 as compared to Honda® GX200's standard air filter. ²TransportGuard not available on Vanguard 400 EFI/ETC engine.

³See https://www.vanguardpower.com/na/en_us/support/warranty.html for warranty details.

Visit vanguardpower.com for complete details. ⁵EFI/ETC only available on Vanguard 400 EFI/ETC model.

Find out more at
vanguardsingleadvantage.com

Vanguard 300

10.0 Gross HP

EFFICIENCY DEFINED.

The Vanguard 300 – 10.0 Gross HP (7.5 Gross kW*) is designed to outperform the competition in overall performance, true power and maintenance. Market-driven innovations such as TransportGuard, Vanguard's 3-in-1 control that eliminates oil/fuel dilution, and product features that ensure easier starting, lower noise and reduced vibration make the new Vanguard 300 the ideal solution for industries like construction, agriculture, and more. The Vanguard 300 engine is a great choice for both first fit and repowering.



10.0
Gross HP

307
Displacement (cc)

1
No. of Cylinders

GAS
Fuel Type

Engine Type	Single-cylinder, 4-stroke, air cooled, OHV (Overhead Valve)
Model Number	19V3
Gross HP (kW) @ 3'600 rpm	10.0 (7.5*)
Displacement (cc)	307
Cylinder	Cast iron sleeve
Bore & Stroke (mm)	80.0 x 61.0
Fuel Tank Capacity (l)	4.8
Oil Capacity (l)	0.89
Dry Weight (kg)	32.21
Dimensions L x W x H (mm)	See dimensional drawings (pgs. 12)

STANDARD FEATURES:

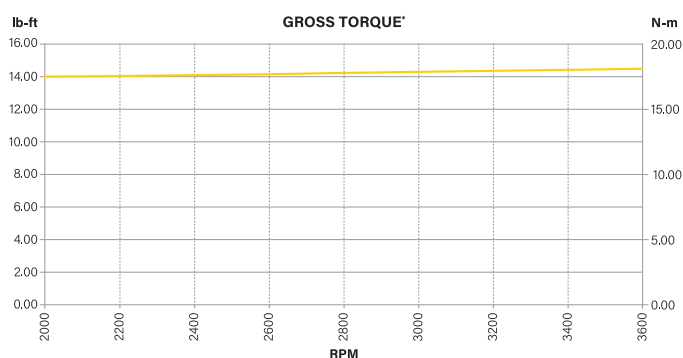
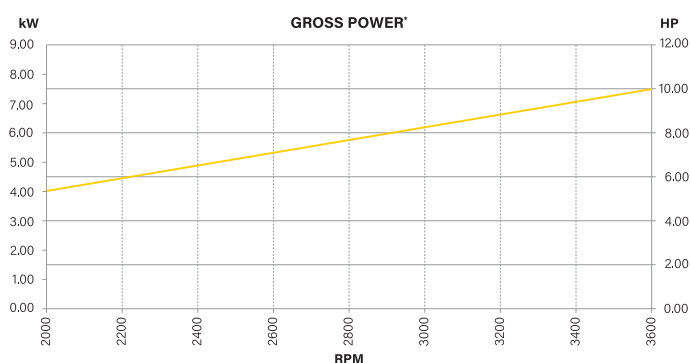
- > TransportGuard
- > Dual ball bearing
- > Integrated cyclonic air cleaner
- > Super Lo-Tone muffler
- > Splash lubrication
- > Mechanical governor

OPTIONAL FEATURES:

- > Electric start
- > Low oil sensor
- > 45° inclination package
- > Clear flange muffler (see drawings pg 13)
- > Metric flange
- > Tankless / mufflerless
- > Low profile air cleaner

CRANKSHAFT OPTIONS:

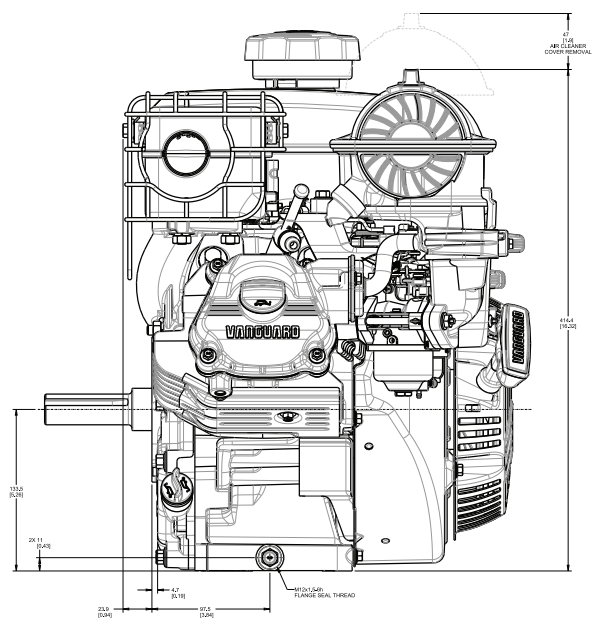
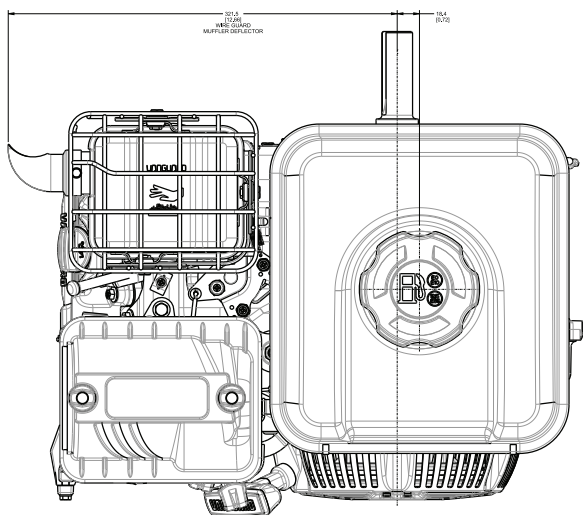
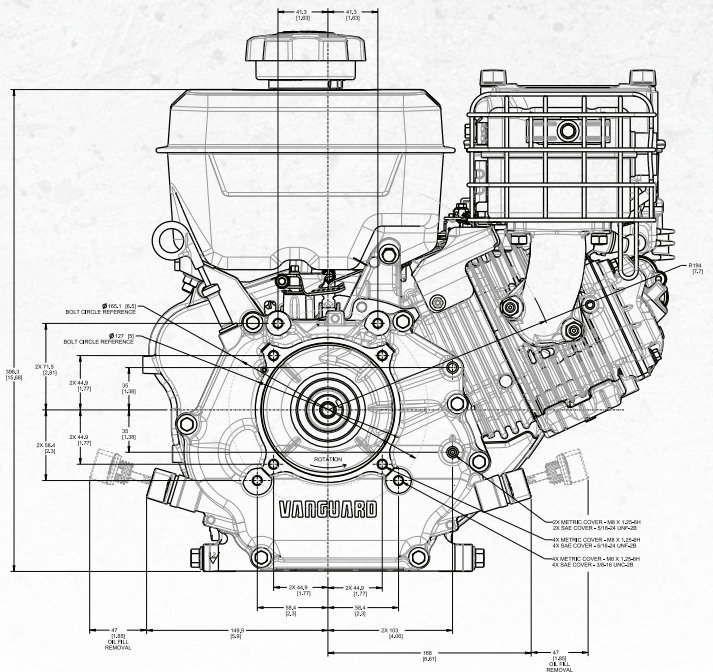
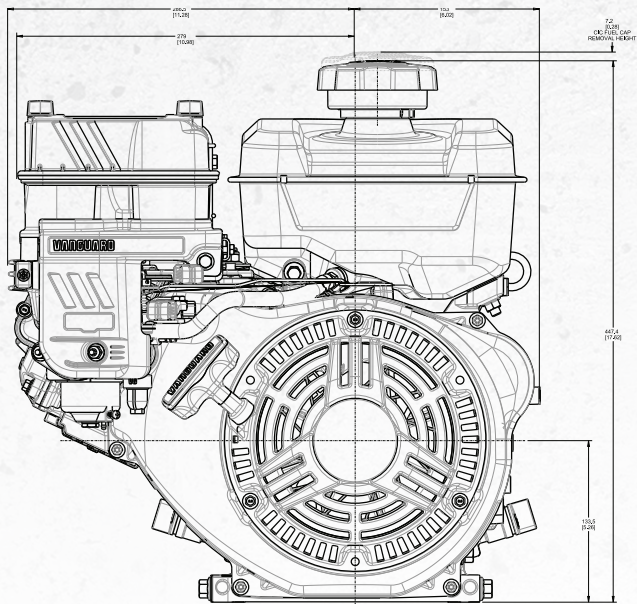
- > 1" dia. 3.488" length straight keyway (25.40mm dia. 88.60mm length)
- > Taper SAE 4.198" (106.62mm length)
- > 25mm dia. 63.1mm length straight keyway

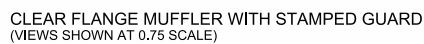


* All power (HP) and torque (Nm) levels are stated Gross per SAE J1940 as rated by Briggs & Stratton

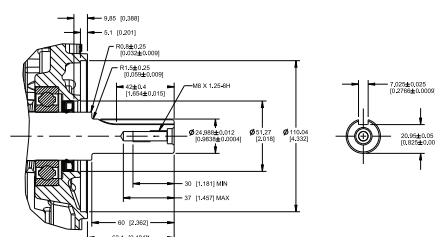
** See https://www.vanguardpower.com/na/en_us/support/warranty.html for warranty details.

DIMENSIONS (unit mm)





CRANKSHAFT OPTIONS**



** Contact your Vanguard representative for additional crankshafts

Vanguard 400

14.0 Gross HP

UNBEATABLE POWER.

The Vanguard 400 – 14.0 Gross HP (10.4 Gross kW*) delivers unrivaled product performance. The engine is feature packed with innovation which reduces maintenance, drives down total cost of ownership, make starting and operation easier, while reducing the environmental impact and raising productivity standards.

It is the ideal workhorse for a very broad range of equipment, including shredders, concrete saws, pumps, blowers and more. The Vanguard 400 engine is a great choice for both first fit and repowers.



14.0
Gross HP

408
Displacement (cc)

1
No. of Cylinders

GAS
Fuel Type

Engine Type	Single-cylinder, 4-stroke, air cooled, OHV (Overhead Valve)
Model Number	25V3
Gross HP (kW) @ 3'600 rpm	14 (10.4*)
Displacement (cc)	408
Cylinder	Cast iron sleeve
Bore & Stroke (mm)	88.0 x 67.0
Fuel Tank Capacity (l)	5.74
Oil Capacity (l)	0.94
Dry Weight (kg)	35.5
Dimensions L x W x H (mm)	See dimensional drawings (pgs. 15)

STANDARD FEATURES:

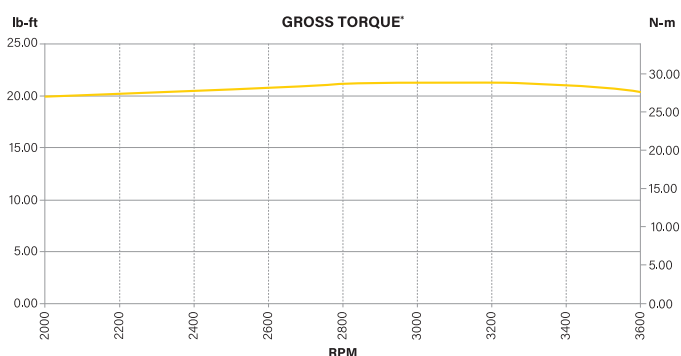
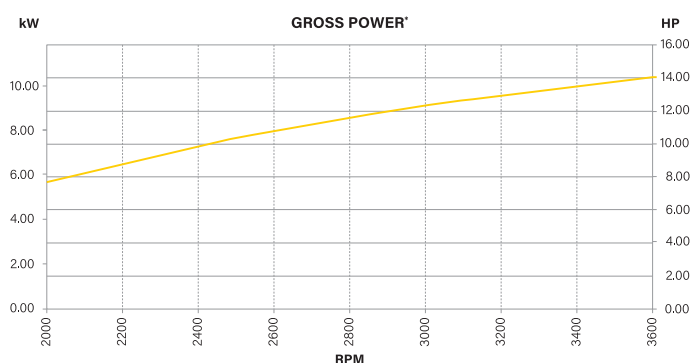
- > TransportGuard
- > Dual ball bearing
- > Integrated cyclonic air cleaner
- > Super Lo-Tone muffler
- > Splash lubrication
- > Mechanical governor
- > Balancer

OPTIONAL FEATURES:

- > Electric start
- > Low oil sensor
- > 45° inclination package
- > Clear flange muffler (see drawings pg 16)
- > Metric flange
- > Tankless / mufflerless
- > EFI / ETC
- > Low profile air cleaner

CRANKSHAFT OPTIONS:

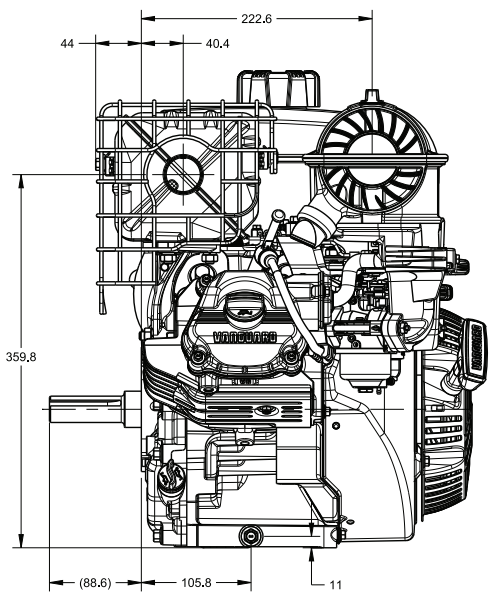
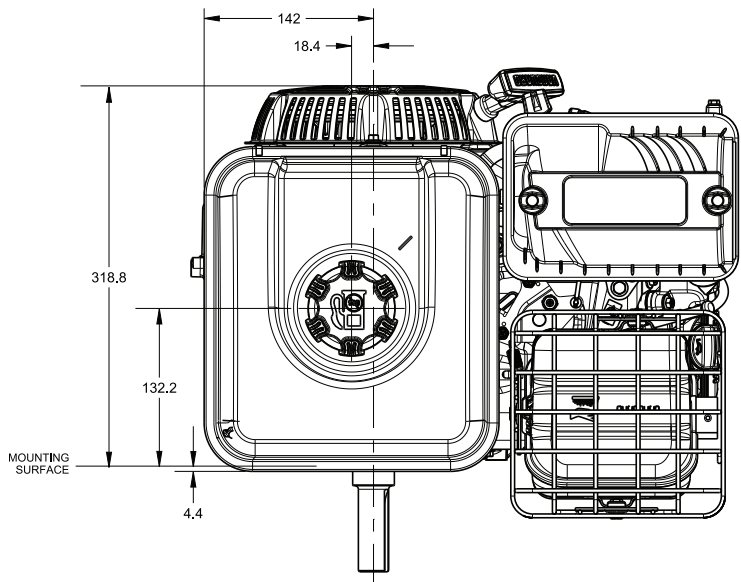
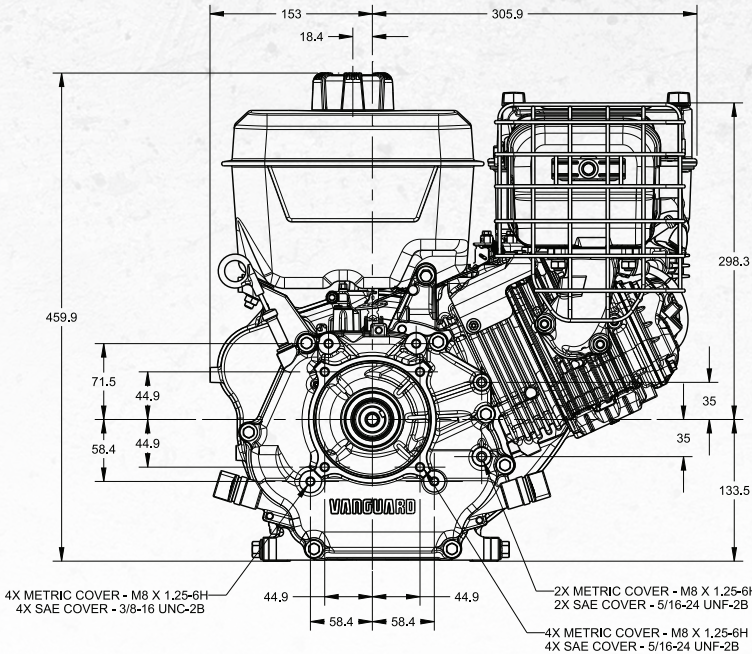
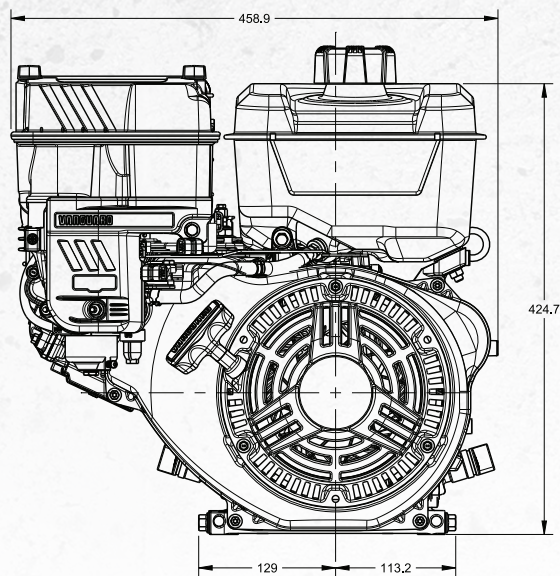
- > 1" dia. 3.488" length straight keyway (25.40mm dia. 88.60mm length)
- > Taper SAE 4.198" (106.62mm length)
- > 25mm dia. 63.1mm length straight keyway



* All power (HP) and torque (Nm) levels are stated Gross per SAE J1940 as rated by Briggs & Stratton

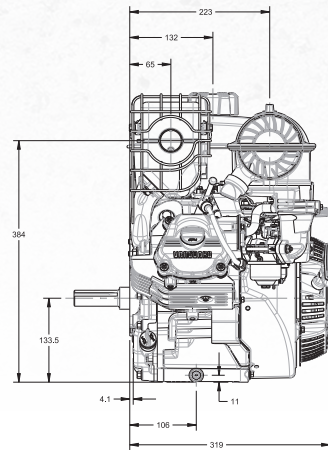
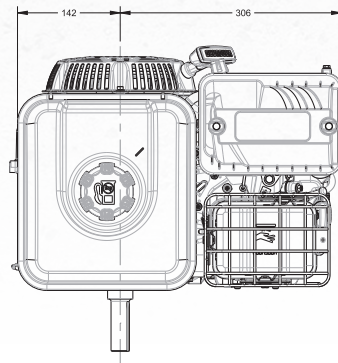
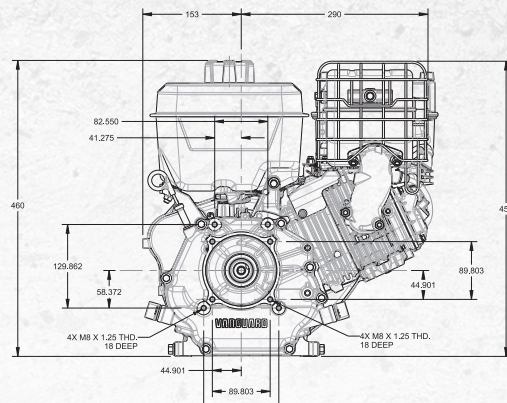
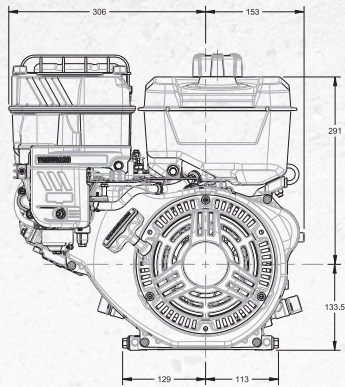
** See https://www.vanguardpower.com/na/en_us/support/warranty.html for warranty details.

DIMENSIONS (unit mm)



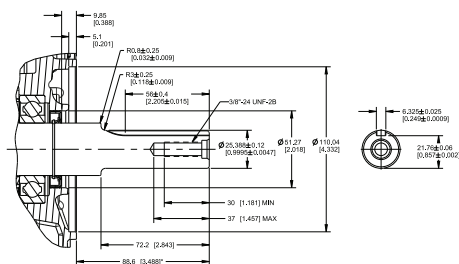
* All power levels are stated gross horsepower at 3'600 rpm per SAE J1940 as rated by Briggs & Stratton.

OPTIONAL CLEAR FLANGE MUFFLER (unit mm)

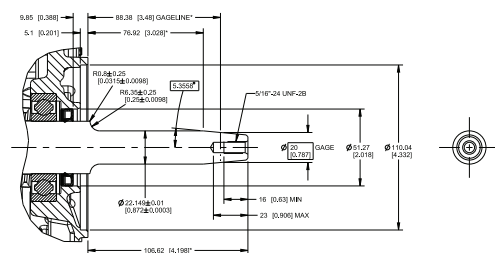


CRANKSHAFT OPTIONS**

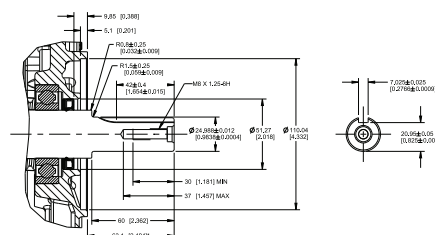
1" DIA 3.488" LENGTH STRAIGHT KEYWAY (25.4mm dia. 88.60mm length)



TAPER SAE 4.198" (106.62 mm length)



25mm DIA 63.1mm LENGTH STRAIGHT KEYWAY



* All power levels are stated gross horsepower at 3'600 rpm per SAE J1940 as rated by Briggs & Stratton.

** Contact your Vanguard representative for additional crankshafts

The Vanguard Single Advantage:

The Vanguard Single-Cylinder engines are designed from the ground up to deliver what you need on the job. Upgrade to Vanguard and get benefit of:



EASY STARTING BY DESIGN

- > Simplified 3 steps starting
- > Easy starting down to -29°C¹
- > Enhanced spark plug location and valve size
- > CDI ignition with variable timing
- > Shorter smoother rope pull

LOWER NOISE AND VIBRATION BY DESIGN

- > Reduced exhaust, intake and mechanical noise
- > Optimized cylinder block
- > Reduced reciprocating mass
- > Precision crankshaft balance
- > Improved user comfort and productivity

EXTENDED MAINTENANCE INTERVALS BY DESIGN

- > Service intervals double the industry standard
- > 200 hrs oil change and 600 hrs air filter change
- > Reduced TCO
- > Nano Media air cleaner filter with Autoshed technology, 120% greater dust holding capacity

TRANSPORTGUARD BY DESIGN

- > 3-in-1 control lever
- > Prevents mixing of fuel and oil during transport
- > Reduces unnecessary oil changes and downtime

DROP-FIT BY DESIGN

- > Same package size as main competitor
- > Similar overhang for standard muffler
- > No additional accessories required
- > Five control cable connection points
- > Easy repower

EXTREME OPERATION BY DESIGN

- > Up to 45° angle of operation in any direction (optional feature)

POWER APPLICATION EXPERTS

- > Full application engineering support from our Power Application Center

¹ Based on proper starting procedures and fuel and oil specifications

Introducing the New Vanguard 400 EFI/ETC



- > Better fuel efficiency
- > Improved performance
- > Consistent power
- > Altitude compensation
- > Easy all-weather chokeless starting



Reduced Environmental Impact



For the maintenance phase oil is the dominant contributor to the environmental impact of an engine accounting for over 80% of the Global Warming Potential.

An independent life cycle analysis by the industry leading Climate Neutral Group demonstrated **that the new Vanguard single-cylinder engines reduce the environmental impact of oil and maintenance parts used during the equipment working life by over 50%***.

* Reduced environmental impact or global warming potential (GWP) of maintenance parts for the new Vanguard 200 & 400 engines compared to respective predecessors, measured in kg CO₂ eq. per Climate Neutral Group study.

OUTPERFORMING ALL THE REST.

ENGINE TECHNICAL SPECIFICATIONS



**



ENGINE	Vanguard 160	Vanguard 200	Vanguard 300	Vanguard 400
ENGINE MODEL	10V3	12V3	19V3	25V3
Gross HP (kW) @ 3600 rpm	5,0 (3,7)	6,5 (4,8)	10,0 (7,5)	14,0 (10,4)
DISPLACEMENT (cc)	169	203	307	408
BORE (mm)	62,0	68,0	80,0	88,0
STROKE (mm)	56,0	56,0	61,0	67,0
WEIGHT (Kg)	17,9*	17,9	32,21	35,5
LENGTH (mm)	274	289	330	363
WIDTH (mm)	366	375	439	455
HEIGHT (mm)	361	361	447	460
OIL CAPACITY (l)	0,6	0,6	0,89	0,94
FUEL TANK CAPACITY (l)	3,1	3,1	4,8	5,74
VALVE CONFIGURATION	OHV	OHV	OHV	OHV
CYLINDER	Cast Iron Sleeve	Cast Iron Sleeve	Cast Iron Sleeve	Cast Iron Sleeve
AIR CLEANER	Integrated Cyclonic Air Cleaner	Integrated Cyclonic Air Cleaner	Integrated Cyclonic Air Cleaner	Integrated Cyclonic Air Cleaner
IGNITION	CDI Ignition	CDI Ignition	CDI Ignition	CDI Ignition
LUBRICATION	Splash	Splash	Splash	Splash

OPTIONS

ELECTRIC START	•	•	•	•
LOW OIL SENSOR	•	•	•	•
45° INCLINATION PACKAGE	•	•	•	•
CLEAR FLANGE MUFFLER	•	•	•	•
LOW PROFILE AIR CLEANER	•	•	•	•
METRIC FLANGE	•	•	•	•
MUFFLERLESS /TANKLESS	•	•	•	•
2:1 GEAR REDUCTION PACKAGE	•	•		
6:1 GEAR REDUCTION PACKAGE	•	•		
EFI / ETC				•

VANGUARD

BRIGGS & STRATTON

Copyright ©2025. All rights reserved.

WWW.VANGUARDPOWER.COM

*Select your region by clicking the dropdown menu at the top-right corner

* The gross power rating for individual gasoline engine models is labeled in accordance with SAE (Society of Automotive Engineers) code J1940 Small Engine Power & Torque Rating Procedure, and is rated in accordance with SAE J1995. Torque values are derived at 2600 RPM for those engines with "rpm" called out on the label and 3060 for all others; horsepower values are derived at 3600 RPM. The gross power curves can be viewed at www.BRIGGSandSTRATTON.COM. Net power values are taken with exhaust and air cleaner installed whereas gross power values are collected without these attachments. Actual gross engine power will be higher than net engine power and is affected by, among other things, ambient operating conditions and engine-to-engine variability. Given the wide array of products on which engines are placed, the gasoline engine may not develop the rated gross power when used in a given piece of power equipment. This difference is due to a variety of factors including, but not limited to, the variety of engine components (air cleaner, exhaust, charging, cooling, carburetor, fuel pump, etc.), application limitations, ambient operating conditions (temperature, humidity, altitude), and engine-to-engine variability. Due to manufacturing and capacity limitations, Briggs & Stratton may substitute an engine of higher rated power for this engine.

All power levels are stated gross horsepower at 3'600 rpm per SAE J1940 as rated by Briggs & Stratton.

** Additional year warranty after engine registration. See https://www.vanguardpower.com/na/en_us/support/warranty.html for warranty details